

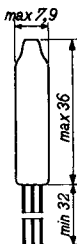
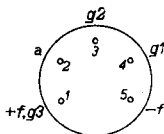
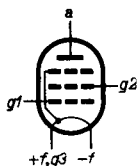
"Miniwatt" DL 65

OUTPUT PENTODE for hearing aids
 PENTHODE DE SORTIE pour appareils de sourds
 ENDPENTHODE für Schwerhörigengeräte

Heating: direct by D.C.;
 parallel supply
 Chauffage: direct par C.C.;
 alimentation en parallèle
 Heizung: direkt durch Gleichstrom;
 Parallelspeisung

$V_f = 1,25 \text{ V}$
 $I_f = 13 \text{ mA}$

Dimensions in mm
 Dimensions en mm
 Abmessungen in mm



Capacitances
 Capacités
 Kapazitäten

$C_{g1} = 2,5 \text{ pF}$
 $C_a = 2,2 \text{ pF}$
 $C_{ag1} < 0,2 \text{ pF}$

Typical characteristics
 Caractéristiques typiques
 Kenndaten

$V_a = 22,5 \text{ V}$
 $V_{g2} = 22,5 \text{ V}$
 $V_{g1} = -0,2 \text{ V}$
 $I_a = 0,475 \text{ mA}$
 $I_{g2} = 0,10 \text{ mA}$
 $S = 0,42 \text{ mA/V}$
 $\mu_{g2g1} = 9$
 $R_i = 0,4 \text{ M}\Omega$

PHILIPS

DL 65 DL 67

OUTPUT PENTODE for hearing aids
PENTHODE DE SORTIE pour appareils de sourds
ENDPENTODE für Schwerhörigengeräte

Heating : direct by D.C.

parallel supply

Chauffage: direct par C.C.

alimentation en parallèle

Heizung : direkt durch Gleichstrom

Parallelspeisung

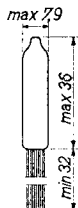
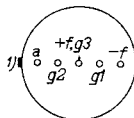
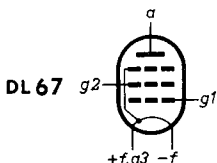
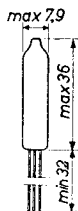
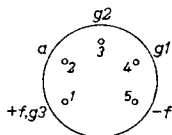
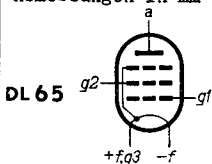
$V_f = 1,25 \text{ V}$

$I_f = 13 \text{ mA}$

Dimensions in mm

Dimensions en mm

Abmessungen in mm



Base, culot, Sockel: Subminiature

Capacitances

$C_{g1} = 2,5 \text{ pF}$

Capacités

$C_a = 2,2 \text{ pF}$

Kapazitäten

$C_{ag1} < 0,2 \text{ pF}$

Typical characteristics

Caracteristiques types

Kenndaten

$V_a = 22,5 \text{ V}$

$V_{g2} = 22,5 \text{ V}$

$V_{g1} = -0,2 \text{ V}$

$I_a = 0,475 \text{ mA}$

$I_{g2} = 0,10 \text{ mA}$

$S = 0,42 \text{ mA/V}$

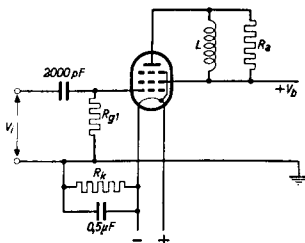
$R_i = 0,4 \text{ M}\Omega$

$\mu_{g2g1} = 9$

1) Red spot. Point rouge. Roter Punkt.

Operating characteristics
 Caractéristiques d'utilisation
 Betriebsdaten

V_b	=	22,5		22,5	V	
R_a	=	0,1		0,1	$M\Omega$	
R_{g1}	=	10^1)		3	$M\Omega$	
R_k	=	C		4	$k\Omega$	
V_i	=	0	0,45	0	0,67	V_{eff}
I_a	=	0,5	0,34	0,20	0,19	mA
I_{g2}	=	0,095	0,09	0,04	0,07	mA
W_c	=	0	1,8	0	1,6	mW
d_{tot}	=	-	10	-	10	%



Limiting values
 Caractéristiques limites
 Grenzdaten

V_a	= max.	45 V
W_a	= max.	25 mW
V_{g2}	= max.	45 V
W_{g2}	= max.	6 mW
I_k	= max.	0,6 mA
V_{g1} ($I_{g1} = +0,3 \mu A$)	= max.	-0,2 V
R_{g1}	= max.	10 $M\Omega$
V_f	= max.	1,55 V
V_f	= min.	0,9 V

¹⁾ The input damping of the valve is about 3.5 $M\Omega$ in this case

l'Amortissement d'entrée est d'environ 3,5 $M\Omega$ en ce cas

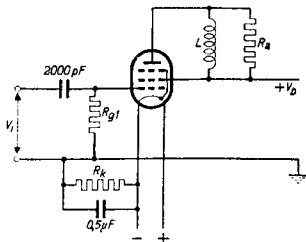
Die Eingangsdämpfung ist in diesem Fall etwa 3,5 $M\Omega$

DL 65
DL 67

PHILIPS

Operating characteristics
Caractéristiques d'utilisation
Betriebsdaten

V_b	=	22,5		22,5	V	
R_a	=	0,1		0,1	MΩ	
R_{g1}	=	10^1		3	MΩ	
R_k	=	0		4	kΩ	
V_i	=	0	0,45	0	0,67	V_{eff}
I_a	=	0,5	0,34	0,20	0,19	mA
I_{g2}	=	0,095	0,09	0,04	0,07	mA
W_o	=	0	1,8	0	1,6	mW
dt_{tot}	=	-	10	-	10	%



Limiting values
Caractéristiques limites
Grenzdaten

V_a	= max.	45	V
W_a	= max.	25	mW
V_{g2}	= max.	45	V
W_{g2}	= max.	6	mW
I_k	= max.	0,6	mA
V_{g1} ($I_{g1} = +0,3 \mu A$)	= max.	-0,2	V
R_{g1}	= max.	10	MΩ
V_f	= max.	1,55	V
V_f	= min.	0,9	V

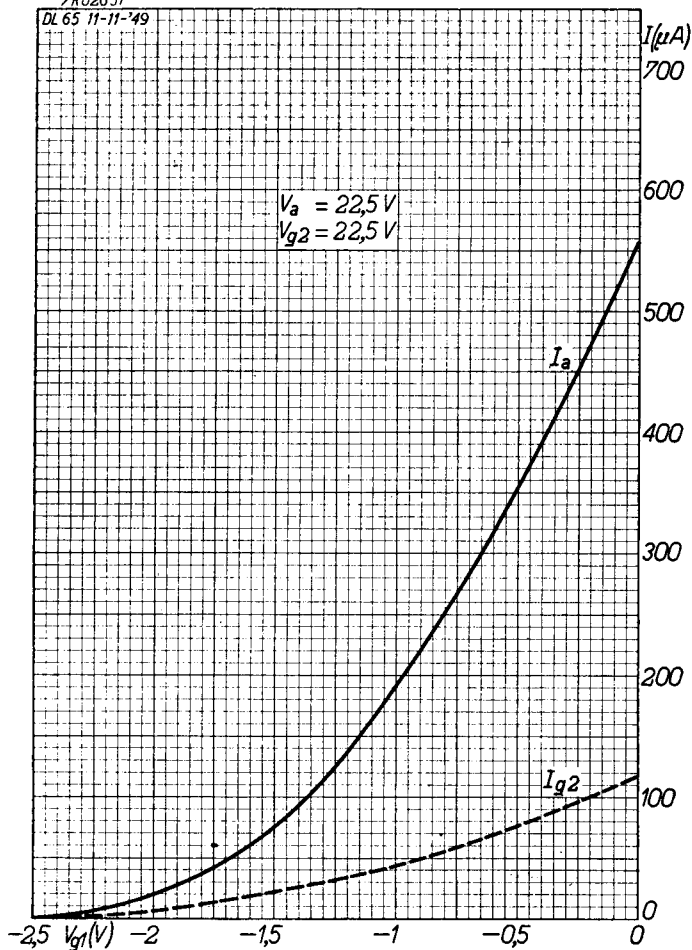
¹⁾ The input resistance of the tube is about 3.5 MΩ in this case
La résistance d'entrée du tube est de 3,5 MΩ environ en ce cas
Die Eingangswiderstand der Röhre beträgt etwa 3,5 MΩ in diesem Fall

"Miniwatt"

DL 65

7R02651

DL 65 11-11-49



11.11.1949

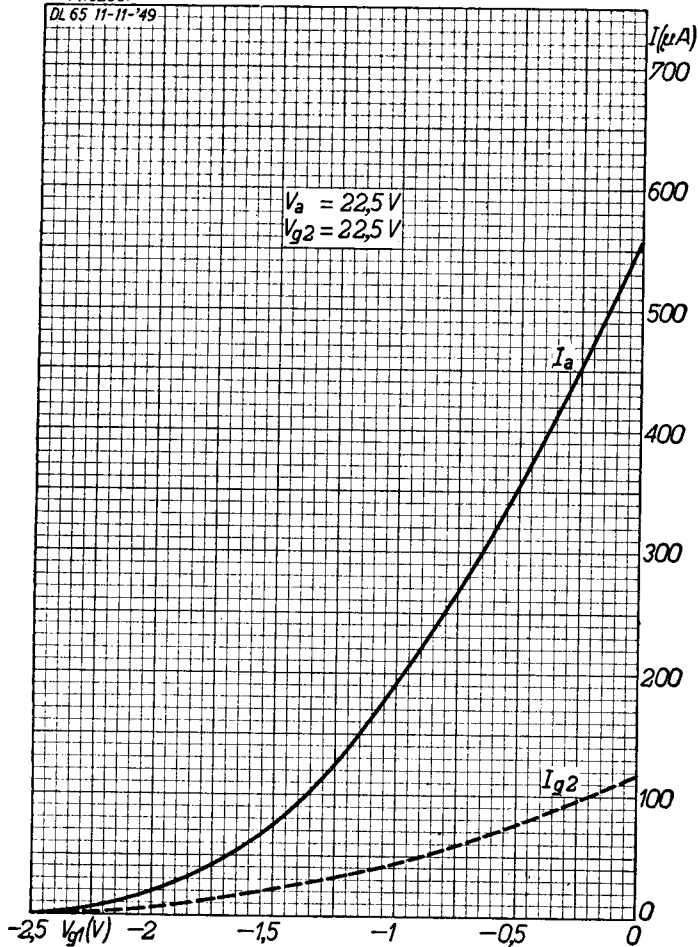
A

PHILIPS

DL 65**DL 67**

7R02651

DL 65 11-11-'49

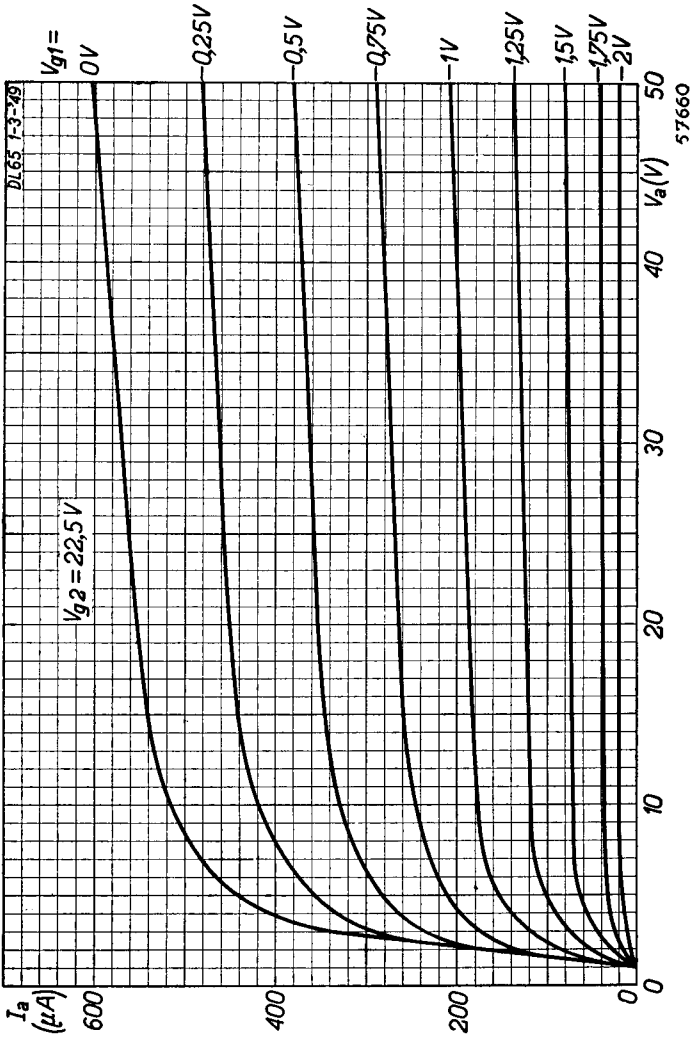


11.11.1953

A

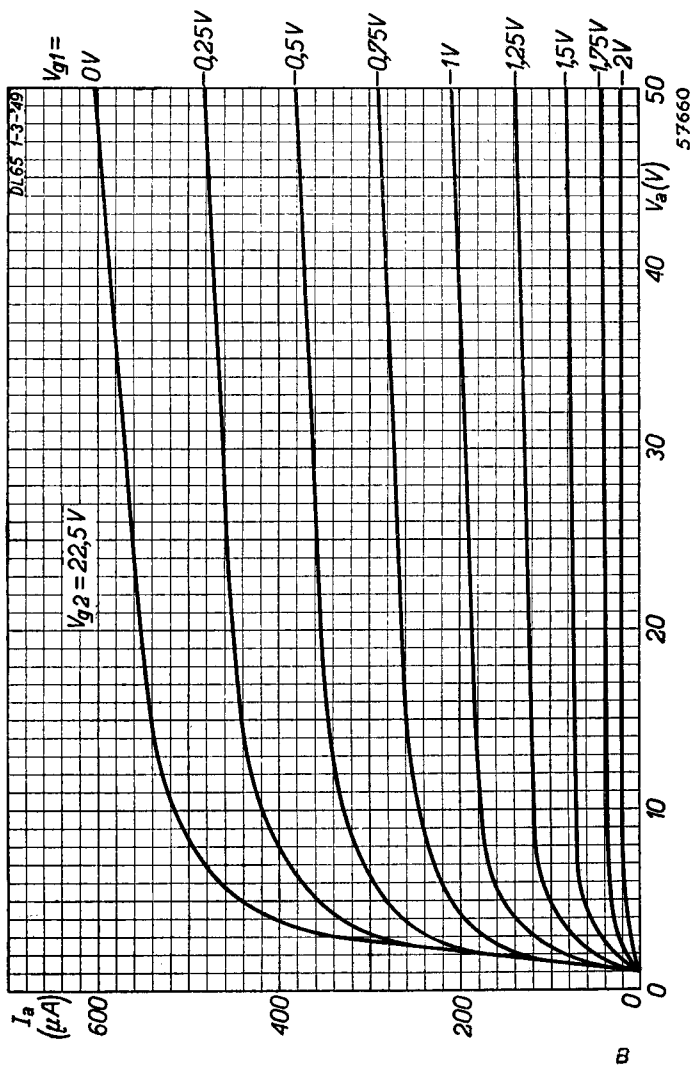
DL 65

"Miniwatt"



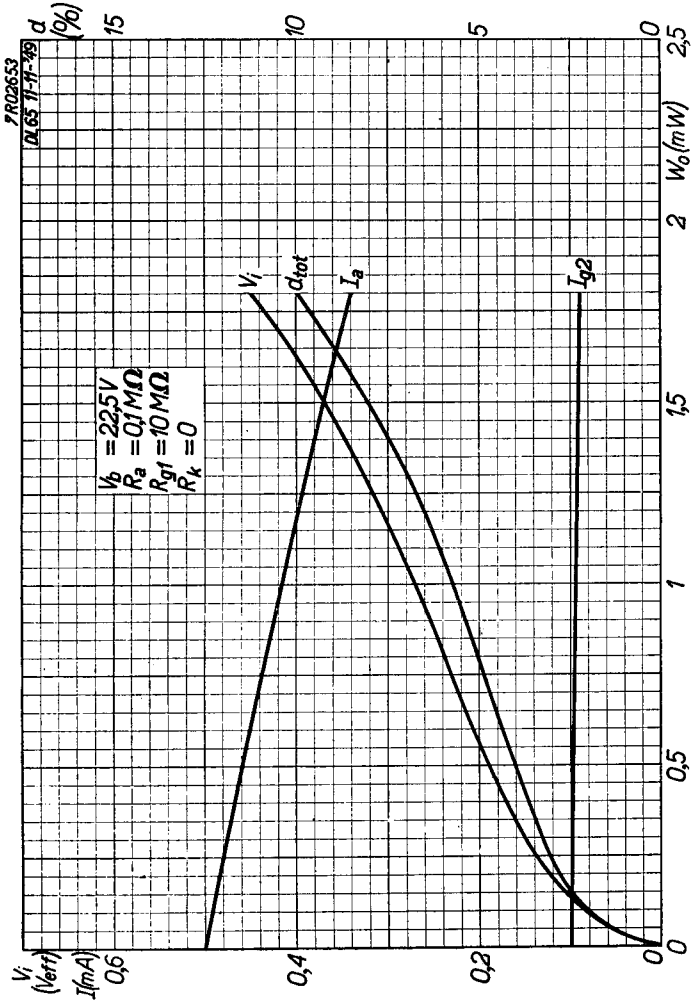
DL 65
DL 67

PHILIPS



"Miniwatt"

DL 65

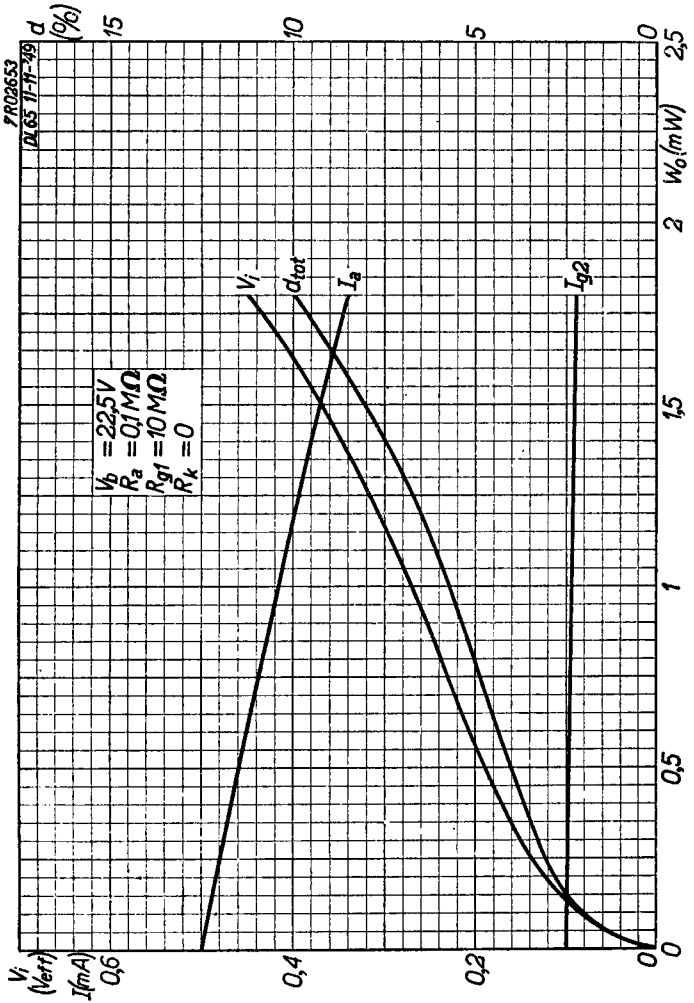


11.11.1949

c

PHILIPS

DL 65
DL 67

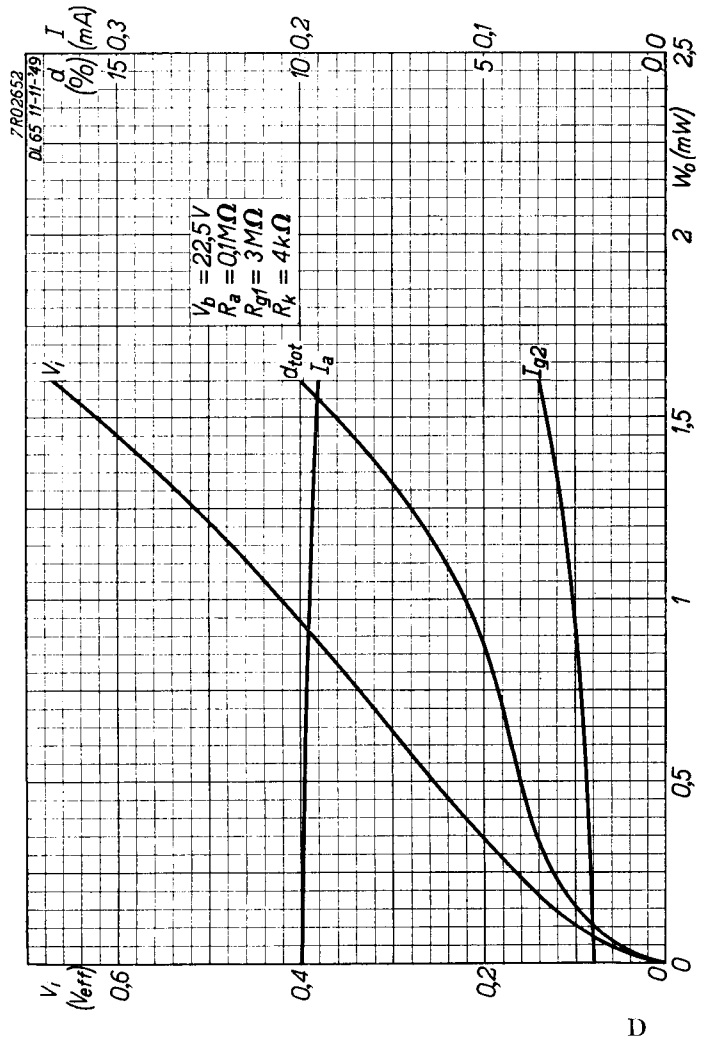


11.11.1953

c

DL 65

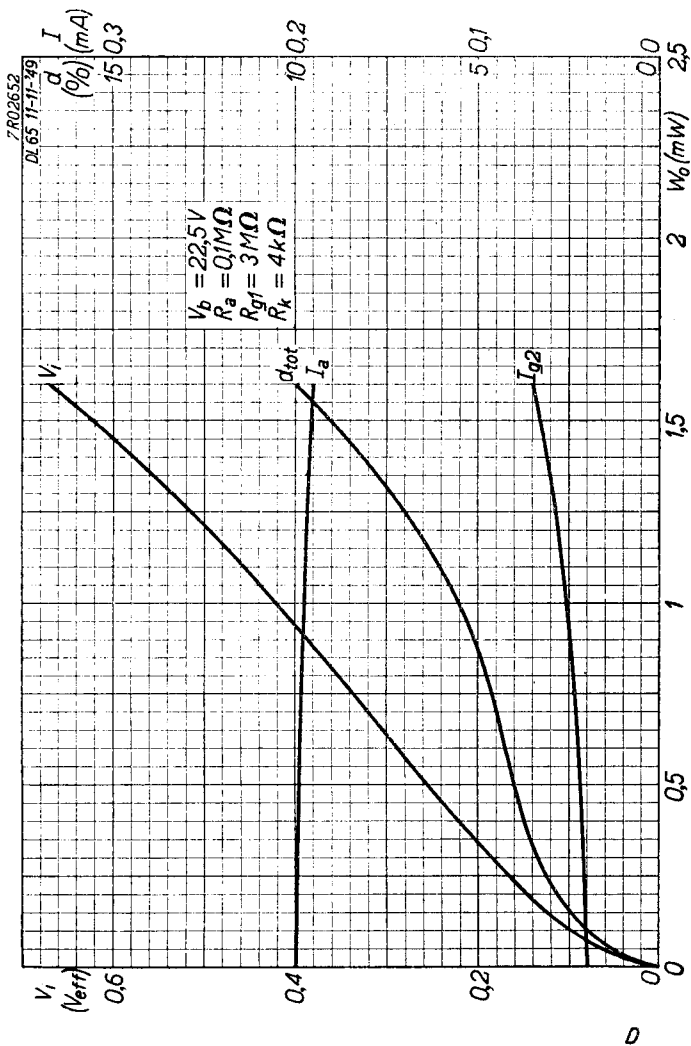
"Miniwatt"



D

DL 65
DL 67

PHILIPS



PHILIPS

*Electronic
Tube*

HANDBOOK

page	DL65 sheet	date
1	1	1949.11.11
2	1	1953.11.11
3	2	1949.11.11
4	2	1953.11.11
5	A	1949.11.11
6	A	1953.11.11
7	B	1949.11.11
8	B	1953.11.11
9	C	1949.11.11
10	C	1953.11.11
11	D	1949.11.11
12	D	1953.11.11
13	FP	1999.08.22